

Table 4 (cont.)

Cat. No.	Models		Cross-reference		Rated voltage (V)	Rated current (A)	Dimensions/size (mm)	Weight (g)
	MIRO		gG(Normal)	aR(Fast)				
0410	RO30A	RS30A	NT00C	-	500/690	4~100	000 4.6 78 49 15 21 48	123
0411	RO30B	RS30B	NT00C	-	500/690	4~100	000 4.6 78 49 15 21 48	117
0412	RO30C	RS30C	3NA3	3NE18..	500/690	10~100	000 4.6 78 49 15 21 52.5	132
0413	RO31A	RS31A	PH00	-	500/690	10~160	00 4.6 78 49 15 30 53	178.5
0414	RO31B	RS31B	NT0	3NE41..	500/1140	6~160	0 4.6 125 68 15 29 61.5	278
0415	RO31C	RS31C	NT1	-	500/690	32~200	1 4.6 135 68 20 29 61.5	293.5

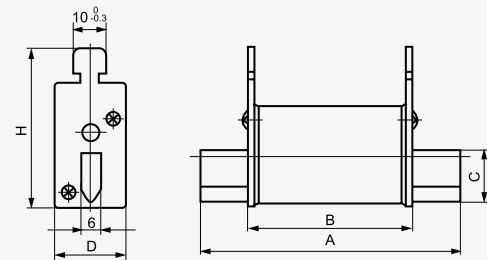


Figure 4.6

Table 4 (cont.)

Cat. No.	Models		Cross-reference		Rated voltage (V)	Rated current (A)	Dimensions/size (mm)	Weight (g)
	MIRO		gG(Normal)	aR(Fast)				
0416	NT00		RT16-00	NGTC00	500/690	6~160	00 4.7 78 49 15 29 56	175
0417	NT0		RT16-0	-	500/690	6~160	0 4.7 125 68 15 29 56	252

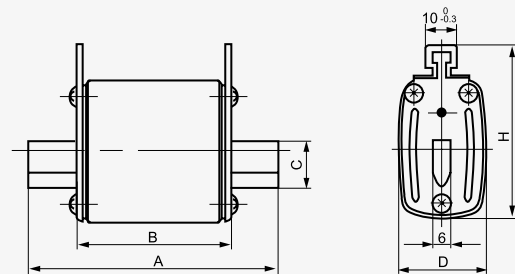


Figure 4.7



Table 4 (cont.)

Cat. No.	Models		Cross-reference		Rated voltage (V)	Rated current (A)	Dimensions/size (mm)	Weight (g)
	MIRO		gG(Normal)	aR(Fast)				
0418	RO32	RS32	NT1 RT16-1	3NE12..	500/690	32~250	1 4.8 135 68 20 48 60	455
0419	RO32A	RS32A	-	-	1140	200	1 4.8 172 110 19.5 44 58	570
0420	RO32B	RS32B	NT1 RT16-1	-	500	250	2 4.8 135 68 20 40 68	393
0421	RO33	RS33	NT2 RT16-2	3NE13..	500/690	80~400	2 4.8 150 68 25 58 70	650
0422	RO33B	RS33B	RT16-2	-	500	400	2 4.8 150 68 25 52 71	580
0423	RO34	RS34	NT3 RT16-3	3NE14..	500/690	160~630	3 4.8 150 68 32 68 80	880
0424	RO35	RS35	-	-	500	6~160	4.8 135 68 20 30 53	249
0425	RO36	RS36	EAP0	-	500	32~200	1 4.8 135 68 20 40 59	356
0426	RO39A	RS39A	NT4a	-	380/500	500~1250	4a 4.8 200 90 50 97 113	2140

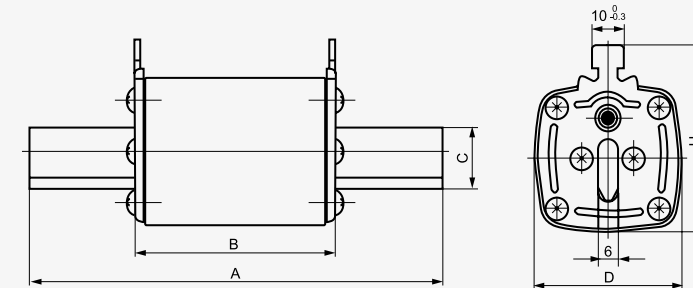


Figure 4.8

Table 4 (cont.)

Cat. No.	Models		Cross-reference		Rated voltage (V)	Rated current (A)	Dimensions/size (mm)	Weight (g)
	MIRO		gG(Normal)	aR(Fast)				
0427	RO34K	RS34K	-	3NC8	500/690	150~630	4.9 140 68 32 68 6 108 10.5 85	810
0428	RO38	RS38	-	3NE3626	500/1000	200~630	4.9 160 86 32 70 6 126 11 82	1050
0429	RO39	RS39	NT4 RT17	-	500	500~1250	4 4.9 200 90 50 97 8 150 16.5 113	2470
0430	RO39B	RS39B	NT4B RT17	-	500	500~1000	4 4.9 200 79 50 88 8 150 17 115	2100

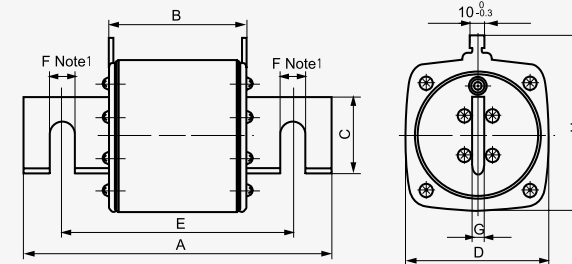


Figure 4.9

Note: The joint holes of two-horizontal type is allowed to be changed to one horizontal one straight type or two straight type.

