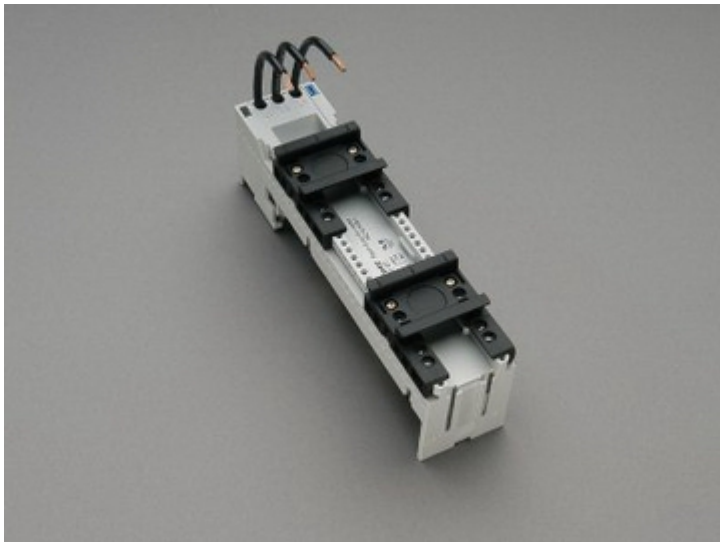


busbar adapter 25 A (32431)



Description

Part No.: 32431

EQUES® 60Classic

busbar adapter 25 A

2 adjustable mounting rails

45 x 200, with leads AWG 12 (4 mm²)

for busbars 12, 15, 20, 25, 30 x 5, 10 and section busbars

System

60Classic

Product group 05

Subgroup 21

pack size 4

EAN 4021267324315

Advantages of the product

Conductor ends ultrasonically sealed.

Click mechanism when pushing onto the busbar.

Katalogseite US US 2020 : 3.10

eCl@ss 6.1 27370304

eCl@ss 7.1 27370304

ETIM 4.0 EC001531

ETIM 5.0 EC001531

Approvals

Standards

IEC 61439-1:2011

GB/T 7251.1

Approvals

CSA, UL, DNV GL



for UL feeder circuits >250V

type number: EEC6025-L

UL file: E123577, UL category (for USA): NMTR <http://www.ul.com>

UL file: E123577, UL category (for Canada): NMTR7 <http://www.ul.com>

CSA file: 110285, CSA class: 3211-37 <http://directories.csa-international.org>

CCC approval: no certification required

Product data

Details IEC

Standards

IEC 61439-1:2011

GB/T 7251.1

Electrical data IEC

Rated current (IEC): 25 A

rated voltage (IEC) AC: 690 V

rated isolation voltage U_i AC: 800 V

rated surge voltage U_{imp} : 6 kV

short-circuit withstandability: the short-circuit capacity of the combination of adapter and motor starter depends on the motor starter

Motorschutzschalter bis 25 A:

50 kA @ 600 V / Durchlassstrom 7 kA

Motorschutzschalter bis 32 A:

25 kA @ 480 V / Durchlassstrom 9 kA

power dissipation of the article:

The power dissipation at a typical load of 80 % of the rated current results to 1.2 W.

(The power dissipation for operation with rated current would be 1.9 W.)

Details UL

Standards

UL 508

for UL feeder circuits >250V

Electrical data UL

rated current (UL): 25 A

rated voltage (UL) AC: 600 V

SCCR unprotected max.: 5 kA

3 cycles (without OPD) @ 600 V AC

SCCR protected max.: 65 kA

SCCR: 30 kA with any NKJH Comb. Motor Controller 12,5 A / 600 V AC

50 kA with any NKJH Comb. Motor Controller 32 A / 480 V AC

65 kA with any NKJH Comb. Motor Controller 16 A / 480 V AC

65 kA with any NKJH Comb. Motor Controller 25 A / 480 V AC

Mechanical data

W x H x D: 45 x 200 x 63

weight: 32.6 kg/100

poles: 3-pole

for busbars: 12, 15, 20, 25, 30 x 5, 10 and section busbars

Material properties

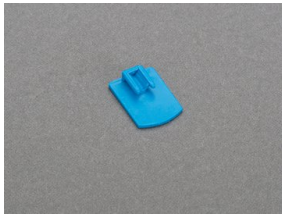
- Body: temperature stability 125°C,
self-extinguishing in acc. to UL 94,
creepage resistance CTI 600,
halogen-free
- DIN rail: temperature stability 125°C,
self-extinguishing in acc. to UL 94,
creepage resistance CTI 550,
halogen-free
- Screws: screw +/- (PZ1), galvanized, chromized

Conductor insulation: temperature-resistant up to 105 °C

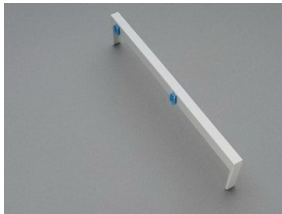
Reference

For compact mounting of complete motor circuits with commercially available switchgear and safe mechanical and electrical connection to the busbar system.

Accessories



32969
mounting rail end stop



32963
side-mounted module for busbar adapters
attachable to both sides
9 x 200