



**MINGRONG**

Professional Manufacturer for High & Low Voltage Fuses and Fusegears Combined Electrical Appliance

**Product Center**

>> Home / Product Center / Cylindrical Fuse Links



**INQUIRY**  
00-800-9662

Parameter Feature Outline Curve

Table 1

Cat. No.	Models		Cross-reference		Dimensions/sizes (mm)	Rated voltage (V)	Rated current (A)	Weight (g)
	gG(Normal)	aR(Fast)	gG(Normal)	aR(Fast)				
0101	RO06	RS06	-	-	1.1 φ12.7 × 29	250/380	1~32	6.5
0102	RO07	RS07	-	-	1.1 φ30 × 57	600	10~100	75
0103	RO09	RS09	-	-	1.1 φ18 × 37	500	2~63	17.4
0104	RO10	RS10	-	-	1.1 φ18 × 50	500	2~63	23.5
0105	RO11	RS11	AJT JKS LPJ	ACL	1.1 φ21 × 58	600	2~32	51.5
0106	RO12	RS12	AJT JKS LPJ	ACL	1.1 φ27 × 60	600	35~100	90
0107	RO13	RS13	-	-	1.1 φ15 × 50	500	2~40	23.2
0108	RO14	RS14	RT19-16 gF1	-	1.1 φ8.5 × 31.5	500	0.5~20	4.4
0109	RO14A	RS14A	-	-	1.1 φ8.5 × 23	250	0.5~20	3.5
0110	RO14B	RS14B	-	-	1.1 φ8.5 × 36	380/500	0.5~20	5.0
0111	RO15	RS15	RT14-20 gF2 RT18-32 RT19-25	KTK KLM	1.1 φ10.3 × 38	500/690	0.5~32	7.7
0112	RO15A	RS15A	-	-	1.1 φ10.3 × 25.8	250	0.5~16	4.8
0113	RO15B	RS15B	-	-	1.1 φ10.3 × 31.5	250/500	0.5~25	5.8
0114	RO15C	RS15C	-	-	1.1 φ10.3 × 34	380/500	0.5~32	6.2
0115	RO15D	RS15D	-	-	1.1 φ10.3 × 57	600	2~32	11
0116	RO16	RS16	RT14-30 gF3 RT18-60 RT19-40	FWP	1.1 φ14.3 × 51	500/690	2~50	20.5
0117	RO16A	RS16A	-	-	1.1 φ14.3 × 38	500	2~50	15.6
0118	RO16B	RS16B	-	-	1.1 φ14.3 × 45	500	2~50	18.5
0119	RO16C	RS16C	-	-	1.1 φ14.3 × 67	500	2~50	27.5
0120	RO17	RS17	RT14-60 gF4 RT18-125 RT19-100	URE2263	1.1 φ22.2 × 58	500/690	10~125	58
0121	RO18	RS18	-	-	1.1 φ9.6 × 30	380	0.5~25	4.8
0122	RO19	RS19	-	-	1.1 φ20.5 × 127	600	0.5~32	91.2
0123	RO19A	RS19A	-	-	1.1 φ20.5 × 76	250/500	0.5~63	63
0124	RO19B	RS19B	-	-	1.1 φ20.5 × 114	600	0.5~32	85
0125	RO19C	RS19C	-	-	1.1 φ27 × 139	600	32~63	172.4
0126	RO19D	RS19D	-	-	1.1 φ27 × 147	600	32~63	160
0127	RO54	RS54	-	-	1.1 φ5 × 20	250	0.5~16	1
0128	RO55	RS55	-	-	1.1 φ5 × 25	250	0.5~16	1.3
0129	RO56	RS56	-	-	1.1 φ6 × 20	250	0.5~16	1.7
0130	RO57	RS57	-	-	1.1 φ6.3 × 25	250	0.5~16	2.1
0131	RO58	RS58	-	-	1.1 φ6.3 × 31.5	250/500	0.5~16	2.5

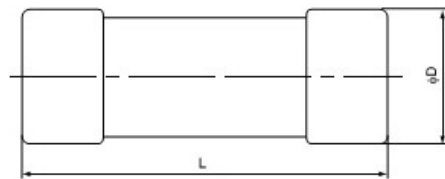


Fig 1.1



浙江明融电气 中国驰名商标

About Mingrong

- Company Profile
- Development
- Organization

News and media

- Company news
- Enterprise video
- Exhibition information

Products and Services

- Fuse links
- Bole connected fuse links
- Fuse bases

Support

- Customer Service Center
- Customer complaints
- Marketing network

Jobs

- Talent concept
- Recruitment information
- Recruitment line

Contact Us

- Regions
- Contact
- Sitemap

President address

Fuse alarms

Technical FAQ

Fuse carriers

Download

Combinating electric of fuse

Automobile Fuse

High voltage fuse

