

Table 4 (cont.)

Cat. No.	Models		Cross-reference		Rated voltage (V)	Rated current (A)	Dimensions/size (mm)					Weight (g)		
	MIRO		gG(Normal)	aR(Fast)			Sizes Fig.	A	B	C	D		H	
0410	RO30A	RS30A	NT00C	-	500/690	4~100	000	4.6	78	49	15	21	48	123
0411	RO30B	RS30B	NT00C	-	500/690	4~100	000	4.6	78	49	15	21	48	117
0412	RO30C	RS30C	3NA3	3NE18..	500/690	10~100	000	4.6	78	49	15	21	52.5	132
0413	RO31A	RS31A	PH00	-	500/690	10~160	00	4.6	78	49	15	30	53	178.5
0414	RO31B	RS31B	NT0	3NE41..	500/1140	6~160	0	4.6	125	68	15	29	61.5	278
0415	RO31C	RS31C	NT1	-	500/690	32~200	1	4.6	135	68	20	29	61.5	293.5

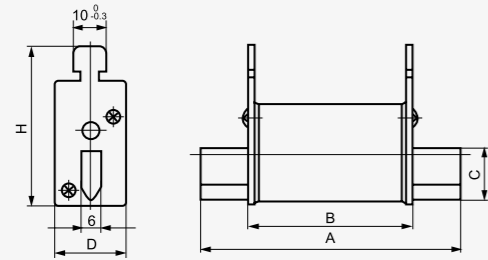


Figure 4.6



Table 4 (cont.)

Cat. No.	Models		Cross-reference		Rated voltage (V)	Rated current (A)	Dimensions/size (mm)					Weight (g)		
	MIRO		gG(Normal)	aR(Fast)			Sizes Fig.	A	B	C	D		H	
0416	NT00		RT16-00	NGTC00	500/690	6~160	00	4.7	78	49	15	29	56	175
0417	NT0		RT16-0	-	500/690	6~160	0	4.7	125	68	15	29	56	252

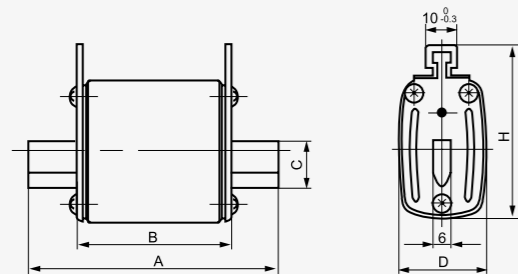


Figure 4.7



Table 4 (cont.)

Cat. No.	Models		Cross-reference		Rated voltage (V)	Rated current (A)	Dimensions/size (mm)					Weight (g)		
	MIRO		gG(Normal)	aR(Fast)			Sizes Fig.	A	B	C	D		H	
0418	RO32	RS32	NT1 RT16-1	3NE12..	500/690	32~250	1	4.8	135	68	20	48	60	455
			3NA1 RT20-1	NGTC1										
0419	RO32A	RS32A	-	-	1140	200	1	4.8	172	110	19.5	44	58	570
0420	RO32B	RS32B	NT1 RT16-1	-	500	250	2	4.8	135	68	20	40	68	393
0421	RO33	RS33	NT2 RT16-2	3NE13..	500/690	80~400	2	4.8	150	68	25	58	70	650
			3NA1 RT20-2	NGTC2										
0422	RO33B	RS33B	RT16-2	-	500	400	2	4.8	150	68	25	52	71	580
0423	RO34	RS34	NT3 RT16-3	3NE14..	500/690	160~630	3	4.8	150	68	32	68	80	880
			NH3 RT20-3	NGTC3										
0424	RO35	RS35	-	-	500	6~160		4.8	135	68	20	30	53	249
0425	RO36	RS36	EAP0	-	500	32~200	1	4.8	135	68	20	40	59	356
0426	RO39A	RS39A	NT4a	-	380/500	500~1250	4a	4.8	200	90	50	97	113	2140

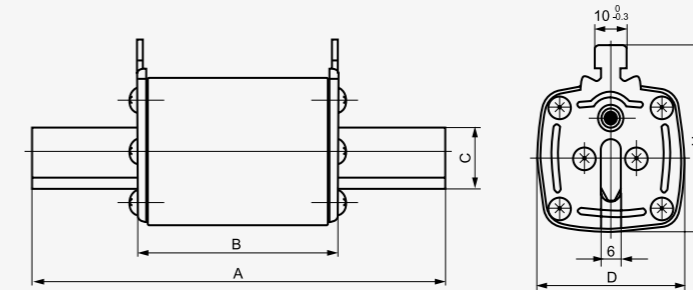


Figure 4.8



Table 4 (cont.)

Cat. No.	Models		Cross-reference		Rated voltage (V)	Rated current (A)	Dimensions/size (mm)								Weight (g)		
	MIRO		gG(Normal)	aR(Fast)			Sizes Fig.	A	B	C	D	G	E	F		H	
0427	RO34K	RS34K	-	3NC8	500/690	150~630	4.9	140	68	32	68	6	108	10.5	85	810	
0428	RO38	RS38	-	3NE3626	500/1000	200~630	4.9	160	86	32	70	6	126	11	82	1050	
0429	RO39	RS39	NT4 RT17	-	500	500~1250	4	4.9	200	90	50	97	8	150	16.5	113	2470
0430	RO39B	RS39B	NT4B RT17	-	500	500~1000	4	4.9	200	79	50	88	8	150	17	115	2100

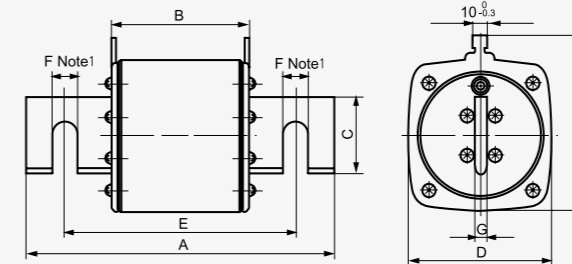


Figure 4.9

Note: The joint holes of two-horizontal type is allowed to be changed to one horizontal one straight type or two straight type.

