

Table 7 (cont.)

Cat. No.	Models MIRO	Cross-reference	Rated voltage (V)	Rated current (A)	Dimensions/sizes (mm)								Weight (g)	
					Fig.	A	B	C	D	E	F	H		ϕd
0723	RS72B	A1-66C-D8	660	200-400	7.7	44	76	108	50	25	6	68	10.5	360.5
0724	RS72C	A1-66C-D1	660	315-400	7.7	44	108	140	50	25	6	68	10.5	383
0725	RS73A	A2-66C-D8	660	250-630	7.7	44	76	108	60	32	6	78	10.5	527
0726	RS73B	A2-66C-D1	660	250-630	7.7	44	108	140	60	32	6	78	10.5	551
0727	RS73D	-	660	200-400	7.7	44	92	127	60	32	6	78	13	550
0728	RS74A	A3-66C-D8	660	400-800	7.7	44	76	108	73	38	6	90	12.5	810
0729	RS74B	A3-66C-D1	660	500-800	7.7	44	108	140	73	38	6	90	12.5	860
0730	RS74D	-	660	500-800	7.7	44	92	127	73	40	6	90	13	944
0731	RS75A	-	660/1000	450-630	7.7	66	108	140	60	32	6	78	12.5	700
0732	RS75B	-	660/1000	500-630	7.7	76	108	140	60	32	6	78	12.5	770
0733	RS76AYK	170M61...	660/1000	630-800	7.7	66	108	140	72	38	6	90	10.5	1045
0734	RS76C	170M62...	660/1000	630-800	7.7	76	108	140	72	38	6	90	12.5	1436
0735	RS450	3NET	1500	450	7.7	172	208	240	74	32	6	92	12.5	1965

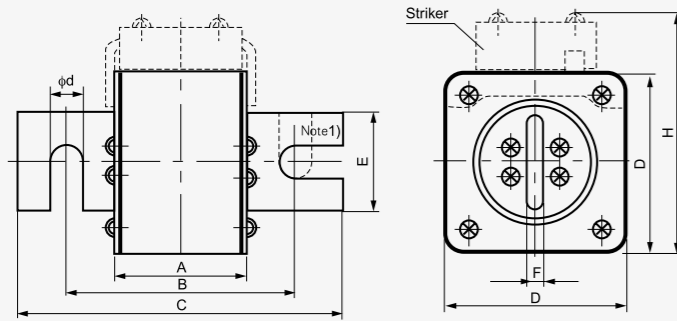


Figure 7.7

Note 1) : Openings on knives are radial in RS76D, RS74SD.

Table 7 (cont.)

Cat. No.	Models MIRO	Cross-reference	Rated voltage (V)	Rated current (A)	Dimensions/sizes (mm)								Weight (g)	
					Fig.	A	B	C	D	E	F	H		ϕd
0736	RS76A	-	660/1000	500-800	7.8	68	102	140	72	38	6	90	12.5 x 22	1055
0737	RS76B	-	660/1000	500-800	7.8	68	108	140	72	38	6	90	12.5 x 22	1040
0738	RS89B	-	1000	1600	7.8	70	107	150	105	50	16	120	14 x 23	2800

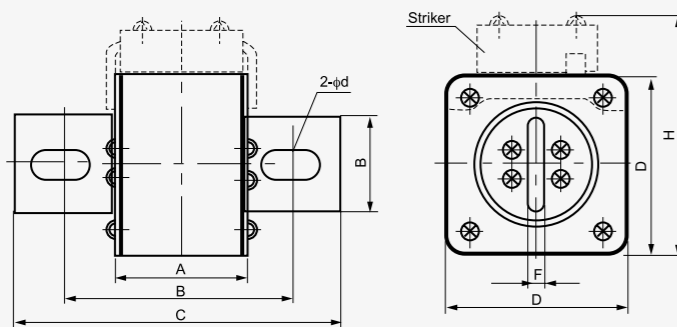


Figure 7.8



Table 7 (cont.)

Cat. No.	Models MIRO	Cross-reference	Rated voltage (V)	Rated current (A)	Dimensions/sizes (mm) Fig.	Weight (g)

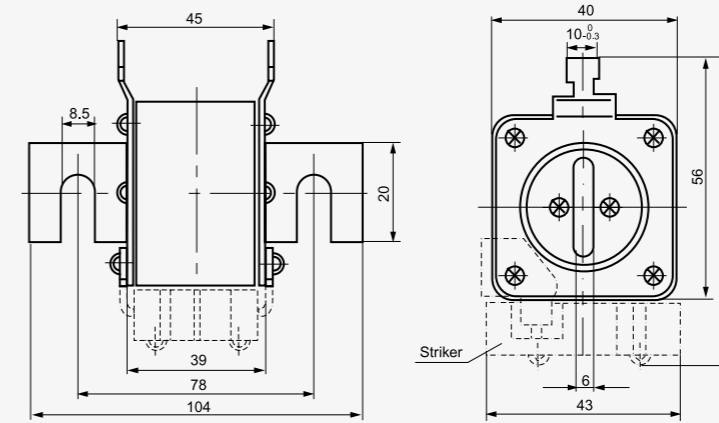


Figure 7.9



Table 7 (cont.)

Cat. No.	Models MIRO	Cross-reference	Rated voltage (V)	Rated current (A)	Dimensions/sizes (mm)						Weight (g)
					Fig.	A	C	D	H	md	
0740	RS550	-	2000	550	7.10	130	136	73	73	12	1960
0741	NGT3M	-	380/660/1000	355-630	7.10	67	76	67	85	12	910
0742	RS77	A1-66C-TS	660	200-400	7.10	42	51	50	68	8	354
0743	RS77A	A0-66C-TS	660	80-160	7.10	42	51	40	58	8	225
0744	RS77B	A2-66C-TS	660	400-630	7.10	42	51	60	78	10	518
0745	RS77C	A3-66C-TS	660	630-1000	7.10	45	54	74	92	12	865
0746	RS77H	-	1000	200-400	7.10	66	76	50	68	8	528
0747	RS78	3NE43..6B	660	315-500	7.10	66	77	60	77	10	660
0748	RS79	-	1000	400-1000	7.10	92	106	74	92	12	1655
0749	RS79A	170M34..	660	200-400	7.10	46	52	43	61	8	277
0750	RS79C	-	1000	400-1000	7.10	77	85	74	92	12	1325
0751	RS79D	140M63..	1000	800-1000	7.10	67	75	74	92	12	1170
0752	RS79E	170M64..	1000	630-1000	7.10	87	95	74	92	12	1420
0753	RS550Z	-	2000	550	7.10	135	143	74	92	12	1985
0754	RS82	CS5F	500	75-200	7.10	40	47	47	70	8	325
0755	RS83	CS5F	500	200-400	7.10	43	51	57	82	8	450
0756	RS84	CS5F	500	450-630	7.10	42	53	72	92	10	830
0757	RS85	CS10F	500	200-630	7.10	66	76	60	77	10	740
0758	RS86	3NE64..	500	300-700	7.10	66	77	72	92	10	1110
0759	RS86A(Z)	RSF-4	500/800	800-1250	7.10	68	78	85	130	12	1200
0760	RS87	RSF-5	500/1000	1250-1600	7.10	70	80	105	150	16	1320
0761	RS87A(Z)	RSF-6	800/1000	1600-2000	7.10	81	91	120	165	16	2216
0762	RS88A	-	660	800-1600	7.10	78	90	105	127	16	1240

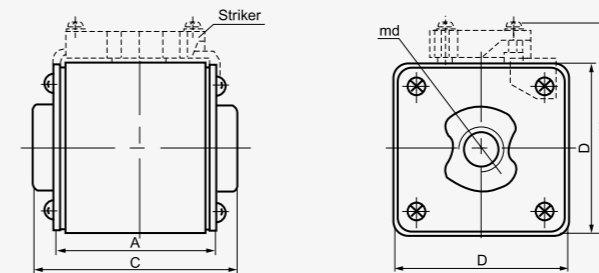


Figure 7.10

