

Table 13

Cat. No.	Models	Components *	Rated insulation voltage(V)	Dimensions (mm)						Weight (g)
				Fig.	L1	L2	D	d	A	
1301**	RX1-1000 RX2-1000	Striker	1000	13.1	85	92	11	7.5	7.5	17
1302	RZS1-1000	Striker	1000	13.1	58	64	11	5	12	15.5
1303	RX1A-1000	Striker	1000	13.1	55	60	8.5	3.5	7.5	12.5

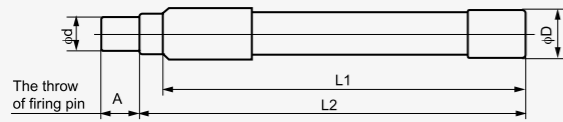


Figure 13.1



Table 13 (cont.)

Cat. No.	Models	Components *	Rated insulation voltage(V)	Dimensions (mm)						Weight (g)
				Fig.	L1	L2	D	d	A	
1304**	RX1-1000 RX2-1000	Striker base	1000	13.2	54.5	114	27	22.5	41~88	42
1305	RZS1-1000	Striker base	1000	13.2	36.5	90	28	26	30~72	33
1306	RX1A-1000	Striker base	1000	Prepared and decided by the customer						27

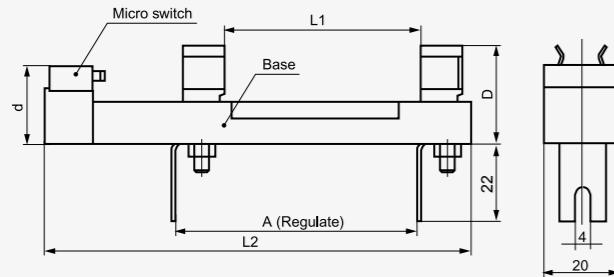


Figure 13.2



Note: \* The model for the striker and striker base is the same, but the name is different.  
 \*\* RX1-1000 and RX2-1000 same in dimensions and technical data.

**Low Voltage Fuse**  
 Professional High Voltage And Low Voltage Fuse Manufacturer

# Fuse Carriers

