

GPM SERIES

PANEL MOUNT/FUSE HOLDERS

Ferraz Shawmut GPM Panel Mount Fuse Holders will accommodate 1" x 1-1/4" 3AG fuses and 5mm x 20mm fuses; most are approved by U.L. and CSA. Cap and body material is bakelite or polycarbonate and function as a screw-in or bayonet style closure. Finger-grip or screwdriver slots are available. All holders are rated for up to 250 volts with amp ratings ranging from 3A to 15A.

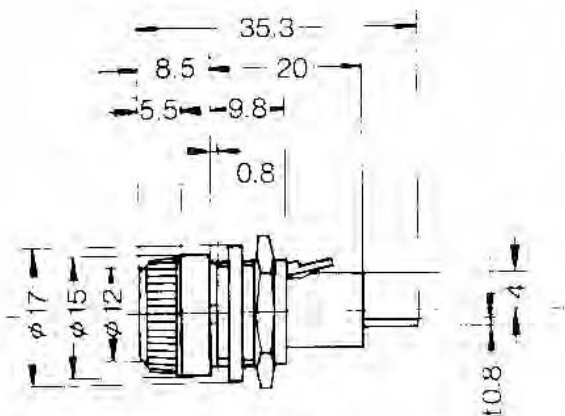
CAT. NO.	CAP TYPE	VOLTS	AMPS	FUSE SIZE	TERMINAL TYPE	APPROVALS
GPM-A	Finger-grip/Screw-in	250	10	5mm x 20mm	Solder	UR/CSA
GPM-A1	Finger-grip/Screw-in	250	10	5mm x 20mm	Solder	
GPM-A2	Finger-grip/Screw-in	250	10	5mm x 20mm	Solder	UR/CSA
GPM-A3	Finger-grip/Screw-in	250	3	5mm x 20mm	Solder	UR/CSA
GPM-A4	Finger-grip/Screw-in	250	6.3	5mm x 20mm	Solder, right angle	
GPM-A5	Screwdriver Slot	250	10	5mm x 20mm	Solder	
GPM-A6	Screwdriver Slot	250	6.3	5mm x 20mm	Solder, right angle	UR/CSA
GPM-A8	Screwdriver Slot	250	10	5mm x 20mm	Solder, right angle	UR/CSA
GPM-A9	Screwdriver Slot	250	6.3	5mm x 20mm	Solder, right angle	UR/CSA
GPM-A10	Screwdriver Slot	250	6.3	5mm x 20mm	3/16" Solder/QC	UR/CSA
GPM-A11	Screwdriver Slot	250	10	5mm x 20mm	Solder, right angle	UR/CSA

RECOMMENDED FUSE USAGE

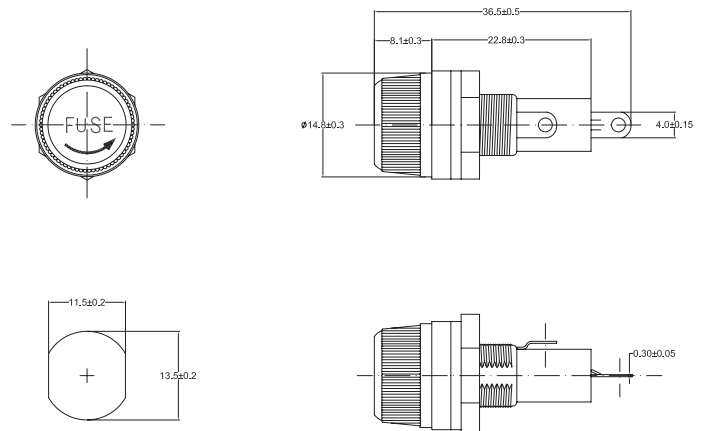
GPM-A: GGM, GGA, GSB, GSC, GDG, GSD, GSF



GPM-A



GPM-A1

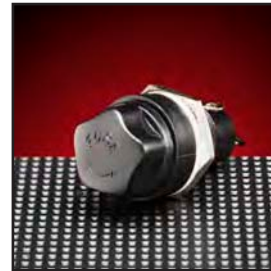
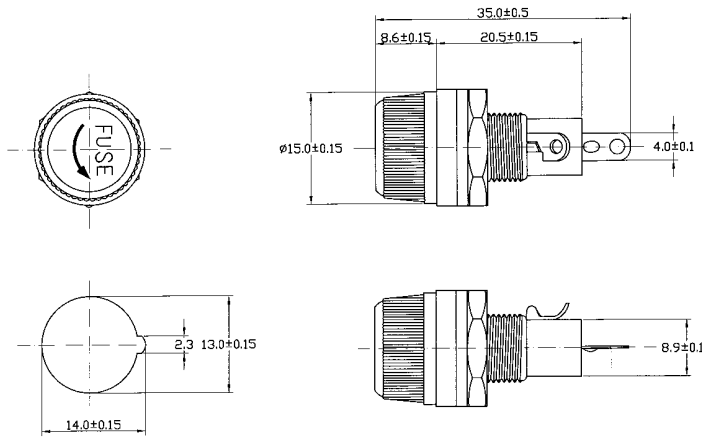


GPM SERIES

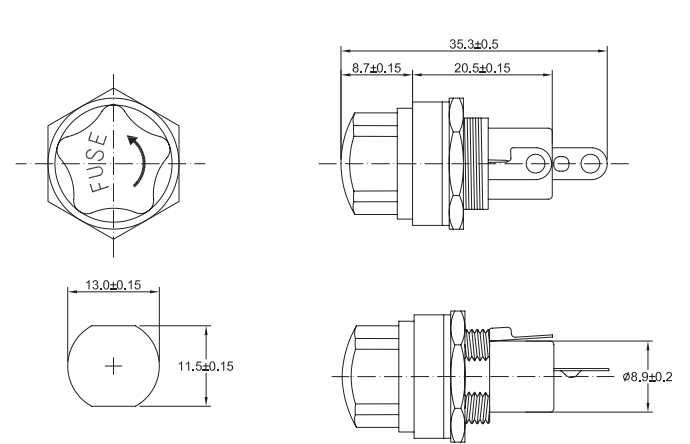
PANEL MOUNT/FUSE HOLDERS



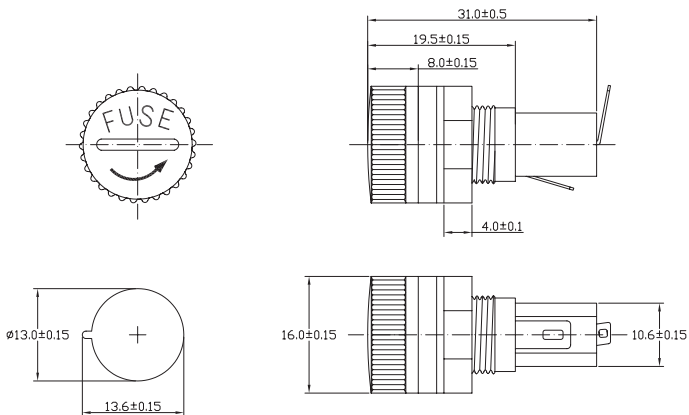
GPM-A2



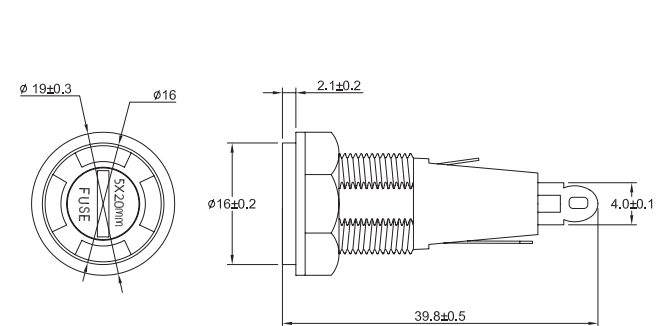
GPM-A3



GPM-A4



GPM-A5

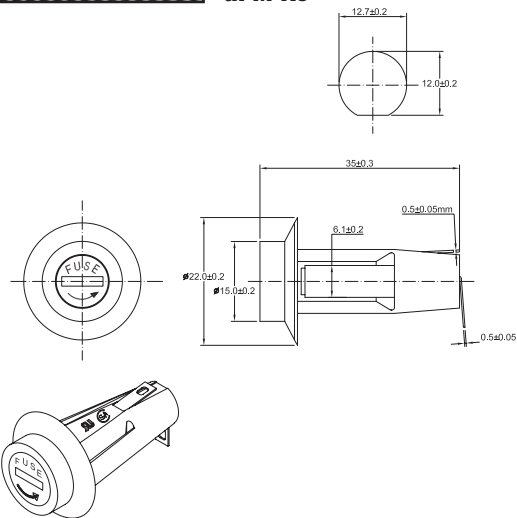


GPM SERIES

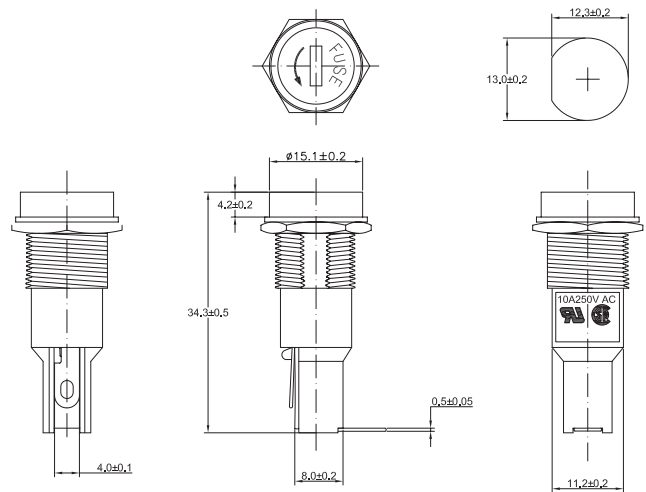
PANEL MOUNT/FUSE HOLDERS



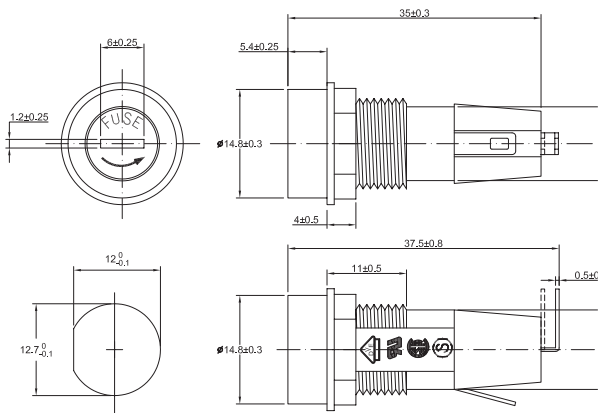
GPM-A6



GPM-A8



GPM-A9



GPM-A10

